

Wound and Eyewash Spray

0.9 % Sodium Chloride Solution, bag-on-valve aerosol

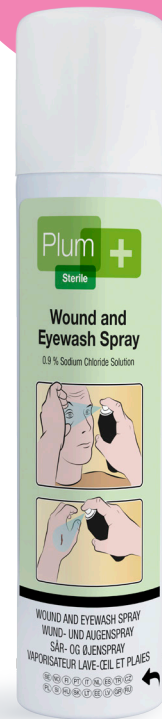
Get fast and efficient first aid within seconds
- for both skin and eyes!

With the new Plum Wound and Eyewash Spray you get immediate and effective care to minor accidents such as cuts and scrapes on the skin or dust and dirt in the eyes. It helps you to minimize the risk of further infection or damage.

Plum Wound and Eyewash Spray is a portable, easy to use, saline-based and pain-free spray. It works at any angle, providing a balanced flow rate of sterile 0.9 % saline solution, strong enough for washing away clot and foreign bodies from wounds, yet soft enough for washing the eyes.

Ideal for the industrial sector, production industry, laboratories, transport of dangerous goods, first responders, law enforcement, firefighters, military and first rescue services, such as disaster relief.

Gentle and effective wound and eyewash spray for first aid



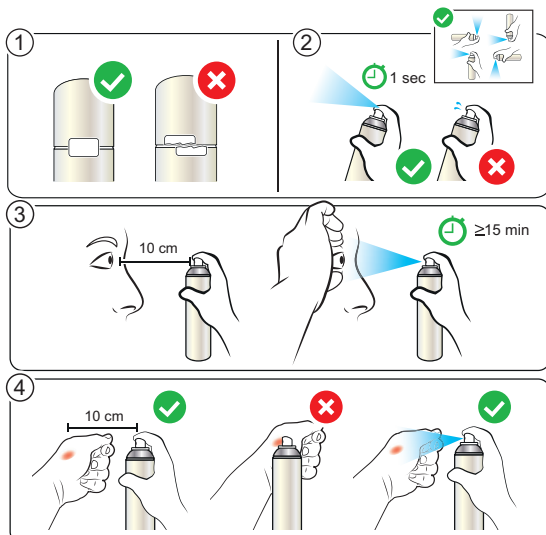
YOUR BENEFITS:

- Quick and easy single hand operation
- Safe, precise and effective rinsing
- Dust cap to protect the spray nozzle from contamination
- Easy to transport, classed as a non-flammable aerosol
- Up to 100% product emptying
- Environmental friendly and fully recyclable
- Hypoallergenic
- Sterile solution without preservatives
- Shelf-life: 3 years. Expiry date is shown on the bottom of the can

250 ML PLUM WOUND AND EYEWASH SPRAY WITH DUST CAP

Rinsing time:	≥ 15 min.
Dimensions:	H: 240 x Ø: 52 mm
Packaging:	12 x 250 ml
Article no:	4554
Packaging:	24 x 250 ml
Article no:	45540

Plum Wound and Eyewash Spray is CE marked according to the Guidelines for Classification of Medical Device Directive (MDD 93/42/EEC)



DIRECTIONS:

- The spray is re-usable until emptied and is sterile until last drop
- Contains up to 15 min. of rinsing time if the seal is not broken
- Cleanse the nozzle before use by briefly spraying in the air
- Place the nozzle approximately 10 cm from the wound or eye
- Press the nozzle and spray onto the wound or into the eye
- Do not let the nozzle touch the wound or the eye
- Do not use if the nozzle is clogged

Plum A/S

Frederik Plums Vej 2 • DK-5610 Assens • Telefon +45 6471 2112 • info@plum.dk • www.plum.eu

plum